

PROJECT DESCRIPTION

Creation of a container terminal, a transport and logistics center and a piggyback terminal on the site of the FEZ Grodnoinvest near the border of the Republic of Poland.

PROSPECTIVE INFRASTRUCTURE



Container terminal - includes a warehouse complex of "A" class with an area of 5,000 m² for storage and sorting of cargo and a container yard with an area of 10,000 m². The terminal's production capacity is 246 containers per day.

Estimated cost of the object
\$5.5 million

Transport and logistics center - includes a warehouse complex with an area of 10,000 m² for storing goods and materials with shelving and floor storage, a temporary storage warehouse with a cargo handling area, a customs warehouse and a public warehouse. The production capacity is 813 containers per day.

Estimated cost of the facility - \$9.5 million



Container-on-flatcar terminal - includes two terminals:

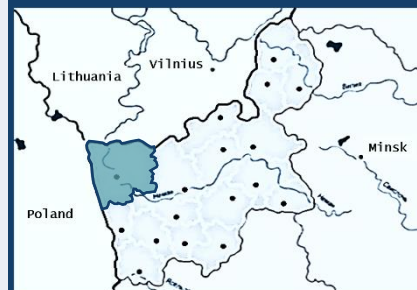
- designed for storing cars and spare parts. warehouse area - 10,000 m². The terminal's production capacity is 60 containers per day.
- designed for storage of agricultural machinery and spare parts. warehouse area - 10,000 m². The production capacity of the terminal is 54 containers per day.



Form: investment idea

Sector: logistics

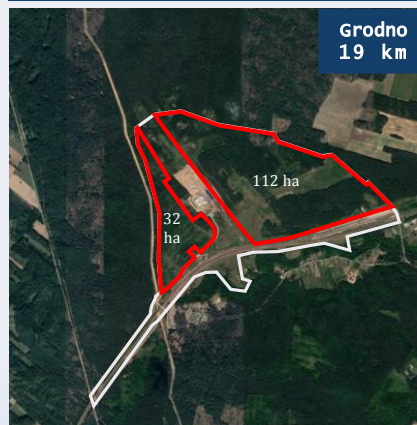
Initiator: FEZ administration



Place of implementation:
Grodno district,
Plot No 5 Sector 2,
Bruzgi district



+375 152 41-23-17
invest@grodnoinvest.by



Grodno
19 km

The volume of logistics services in
Republic of Belarus, 2015-2020, \$ mln



Trade turnover of FEZ residents, thousand tons



The Grodno region serves over 50% of the foreign trade flow between the EU and the EAEU. This is facilitated by the presence of the eastern and western railway tracks, an extensive network of highways, as well as 4 seaports within a radius of 400 km.

By 2025, the trade turnover of FEZ Grodnoinvest due to new residents is planned to increase to 7.5 mln tons per year.

ВИЛАРИС

BreMiNo
Group

